

Haringey Crime Performance Overview

March 2019

Sources:

Except where noted, all data from Metropolitan Police Service (MPS) Website and MPS AWARE System, haringey.gov.uk and covers the 12-month period to January 2019.

Performance Overview



- The Mayor's Police and Crime Plan (2017-2021) has outlined key priorities for Haringey:

Mandatory High Harm Crimes:

- Sexual Violence
- Domestic Abuse
- Child Sexual Exploitation
- Weapon-Based Crime
- Hate Crime

Mandatory Volume Crime:

- Anti-Social Behaviour

Local Priorities:

- Robbery
- Non-Domestic Violence with Injury (VWI)

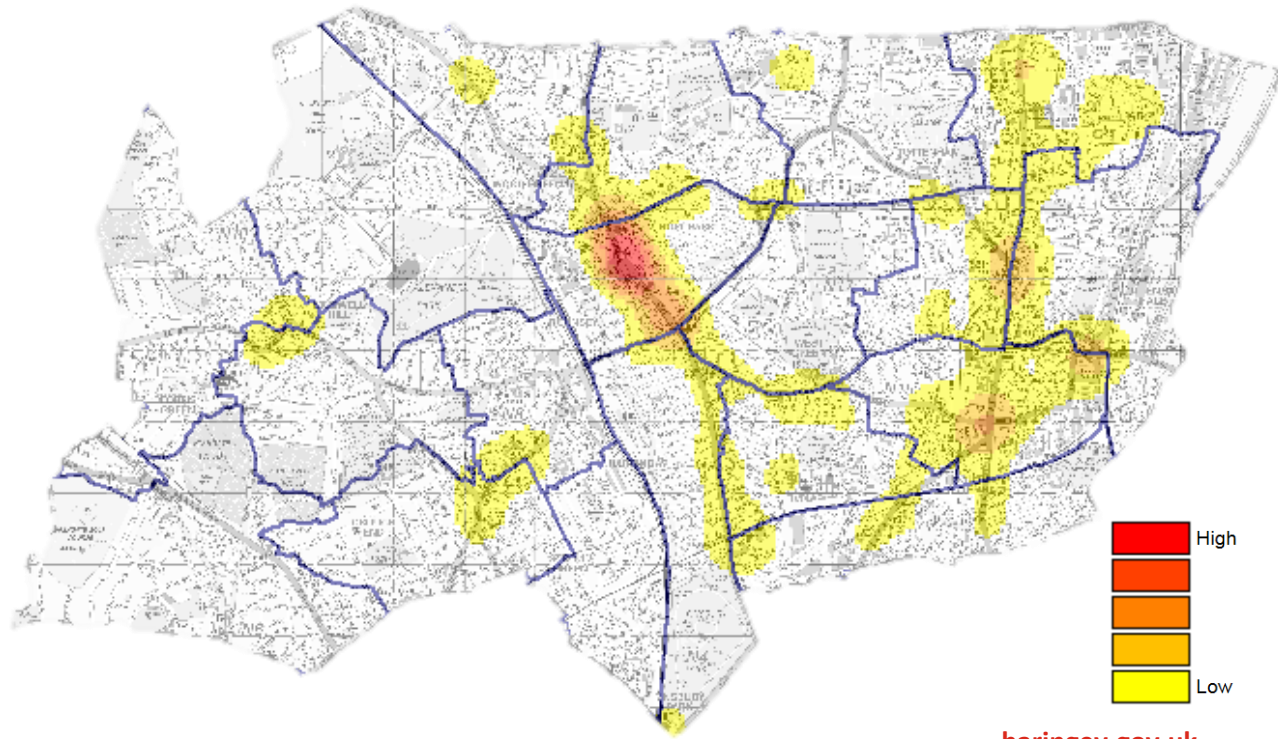
- Key focus on Violence, Vulnerability and Exploitation, whilst balancing response to volume crime
- Ranking tables show Haringey in the London context (No.1 indicates best performing borough)

Total Notifiable Offences

Borough	TNO	London Rank	Volume
Islington	-12.0%	1	28596
Camden	-8.0%	2	35500
Richmond upon Thames	-4.5%	3	12728
Barking and Dagenham	-2.9%	4	18243
Redbridge	-1.6%	5	23399
Hackney	-1.4%	6	31432
Havering	-1.3%	7	18725
Lambeth	-0.7%	8	34805
Merton	-0.2%	9	13842
Sutton	-0.2%	10	12156
Ealing	-0.1%	11	28456
Wandsworth	0.5%	12	25781
Bromley	0.6%	13	23172
Hounslow	0.8%	14	25359
Hillingdon	0.8%	15	25160
Croydon	0.9%	16	30964
Haringey	1.3%	17	31012
Greenwich	1.4%	18	25815
Hammersmith and Fulham	1.6%	19	22193
Kensington and Chelsea	1.6%	20	22064
Brent	2.0%	21	30667
Lewisham	2.5%	22	26092
Newham	2.6%	23	35785
Waltham Forest	3.9%	24	23792
Bexley	4.1%	25	15596
Tower Hamlets	4.1%	26	33633
Barnet	4.5%	27	28396
Southwark	4.8%	28	35872
Harrow	6.7%	29	15085
Kingston upon Thames	7.0%	30	12402
Enfield	10.2%	31	28221
Westminster	11.4%	32	64441
London Total	1.4%		839384

Overall recorded crime in Haringey has increased by 1.3% in the 12 months to January 2019, just below the London wide average increase of 1.4%.

The main hotspots are located around Wood Green High Road and around the A10 corridor, from Bruce Grove to Seven Sisters.



Hate Crime



- There has been a London wide trend of increased reports of some hate crime categories over the past year, including Anti-Semitic, Homophobic and Transgender hate crimes.
- Haringey has experienced an increase of 12% in homophobic hate crime reports in the 12 months to January 2019. London as a whole has seen an increase of 14% in this same category.
- Reductions have been recorded in the volume of hate crime reports for several categories in Haringey, including Racist & Religious hate crime (-7%).

	Haringey Feb 2017 – Jan 2018	Haringey Feb 2018 – Jan 2019	Haringey Change %	London Change %
Anti-Semitic Hate Crime	38	23	-39%	+12%
Disability Hate Crime	14	27	+93%	-1%
Faith Hate Crime	102	82	-20%	-13%
Homophobic Hate Crime	89	100	+12%	+14%
Islamophobic Hate Crime	57	44	-23%	-26%
Racist & Religious Hate Crime	674	627	-7%	-3%
Transgender Hate Crime	8	3	-63%	+24%

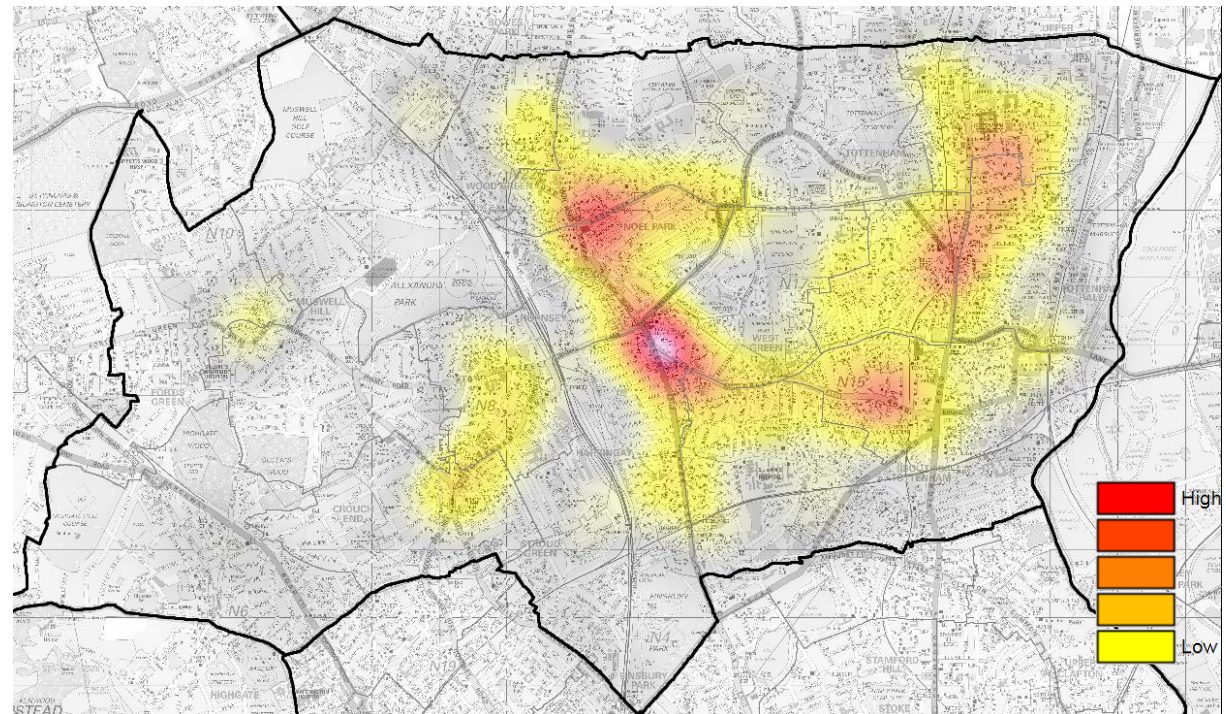
Domestic Abuse Violence with Injury

Borough	Domestic Abuse VWI	London Rank	Volume
Richmond upon Thames	-7.8%	1	345
Brent	-7.4%	2	903
Hackney	-6.7%	3	743
Haringey	-5.8%	4	963
Ealing	-5.4%	5	913
Bromley	-5.4%	6	757
Hammersmith and Fulham	-5.1%	7	504
Wandsworth	-5.0%	8	710
Lewisham	-4.7%	9	975
Croydon	-4.3%	10	1244
Redbridge	-4.0%	11	646
Lambeth	-4.0%	12	917
Barnet	-3.4%	13	771
Southwark	-1.2%	14	1047
Westminster	-0.7%	15	592
Barking and Dagenham	-0.5%	16	786
Harrow	-0.4%	17	507
Tower Hamlets	-0.1%	18	851
Islington	0.3%	19	711
Greenwich	0.9%	20	992
Waltham Forest	1.3%	21	782
Hounslow	1.6%	22	901
Camden	3.2%	23	589
Newham	3.7%	24	1068
Kensington and Chelsea	4.0%	25	368
Sutton	4.4%	26	498
Bexley	4.7%	27	581
Enfield	5.1%	28	946
Havering	10.5%	29	716
Merton	10.9%	30	521
Hillingdon	12.6%	31	829
Kingston upon Thames	14.9%	32	354
London Total	-0.6%		24030

- Reported Domestic Abuse VWI in Haringey has decreased by 5.8% in the 12 months to January 2019, compared to a London wide offending pattern that has experienced a 0.6% reduction.

- Offending takes place primarily in residential locations, with hotspots in Turnpike Lane, Wood Green and Bruce Grove.

- Over two-thirds of all reported Domestic Abuse VWI occurs to the East of the borough.



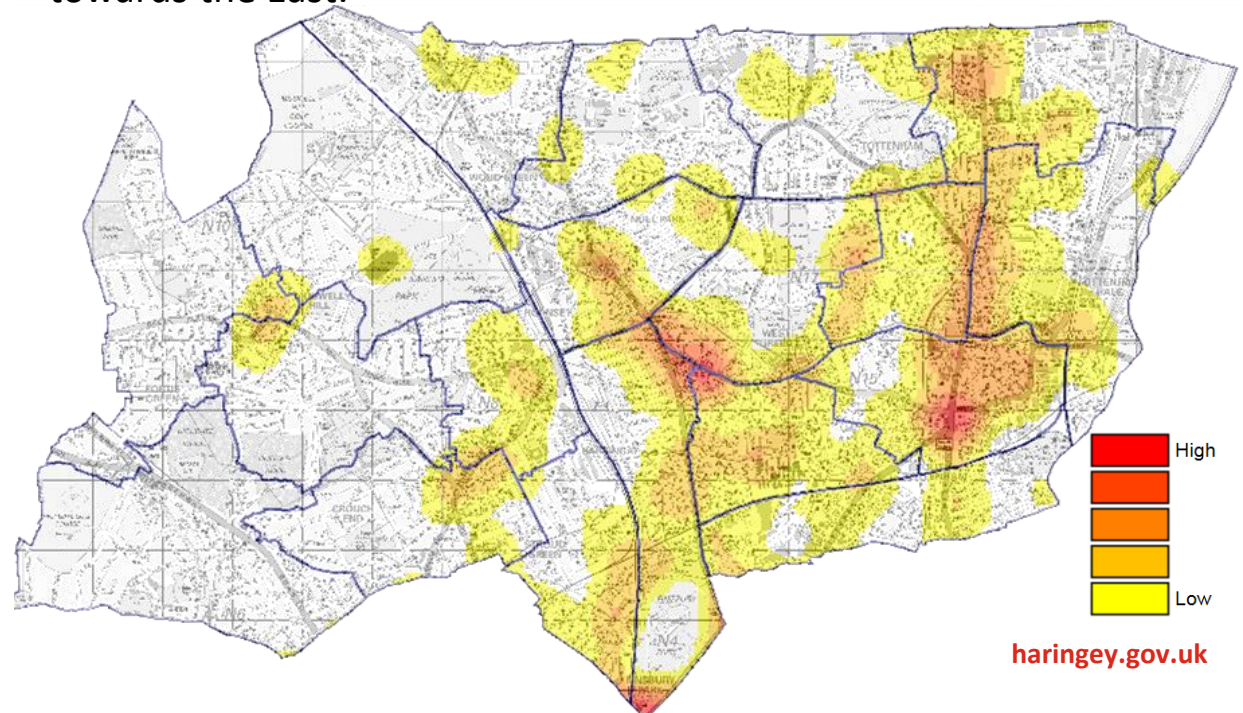
Sexual Offences

Borough	Sexual Offences	London Rank	Volume
Sutton	-17.6%	1	328
Waltham Forest	-16.3%	2	508
Richmond upon Thames	-16.0%	3	295
Hillingdon	-9.1%	4	519
Bexley	-8.0%	5	389
Merton	-6.5%	6	348
Camden	-5.1%	7	727
Islington	-5.0%	8	647
Havering	-4.6%	9	459
Hackney	-4.1%	10	773
Brent	-3.7%	11	677
Redbridge	-3.2%	12	550
Barnet	-2.7%	13	623
Wandsworth	-1.8%	14	715
Greenwich	-1.5%	15	708
Harrow	-0.3%	16	359
Tower Hamlets	0.9%	17	783
Lambeth	4.3%	18	992
Newham	4.6%	19	942
Lewisham	5.5%	20	754
Kensington and Chelsea	5.5%	21	400
Barking and Dagenham	5.6%	22	507
Bromley	6.7%	23	575
Southwark	6.9%	24	916
Hounslow	7.4%	25	597
Enfield	8.8%	26	678
Ealing	11.0%	27	699
Croydon	11.4%	28	1007
Westminster	13.2%	29	1220
Kingston upon Thames	13.7%	30	382
Haringey	17.8%	31	775
Hammersmith and Fulham	37.0%	32	600
London Total	2.3%		20452

- Overall sexual offences in Haringey have increased by 17.8% in the 12 months to January 2019, compared to a London wide average increase of 2.3%.

- 45% of sexual offences in Haringey are categorised in the most serious category of rape, which is slightly above the London wide average of 40%.

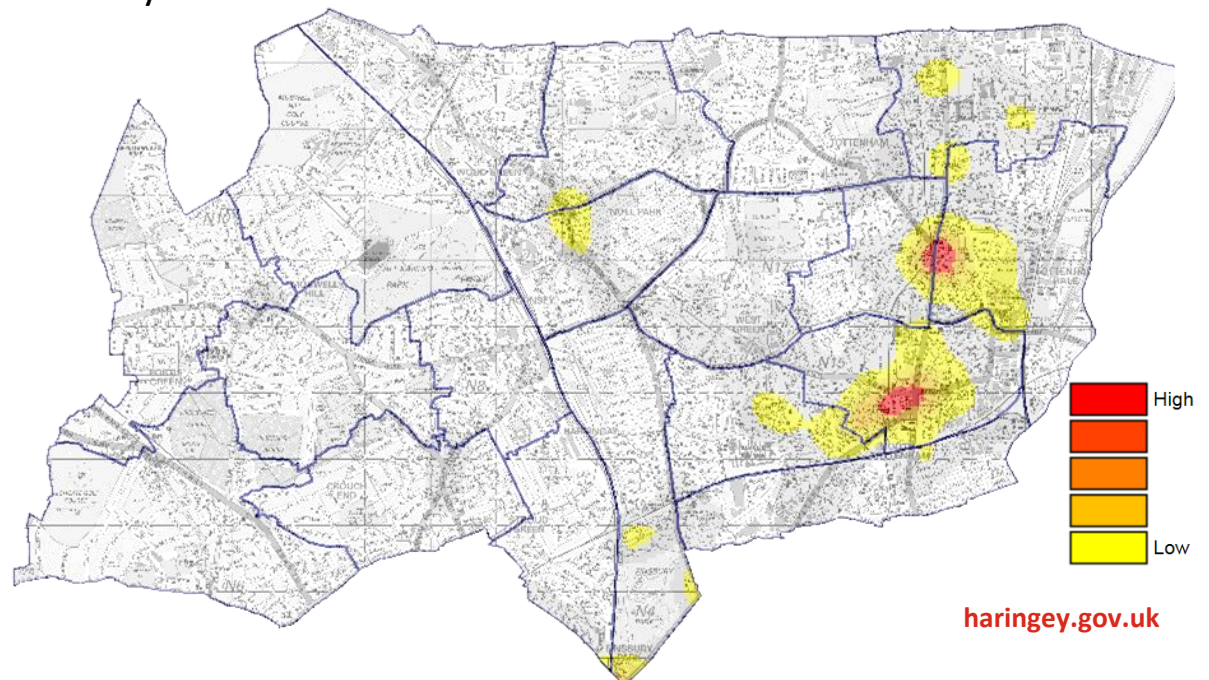
- Offences are spread across entire borough, with more clustering towards the East.



Personal Robbery

Borough	Personal Robbery	London Rank	Volume
Bromley	-33.6%	1	377
Islington	-26.8%	2	1342
Camden	-21.1%	3	1566
Newham	-16.9%	4	1656
Lambeth	-16.8%	5	1203
Barking and Dagenham	-9.7%	6	779
Tower Hamlets	-8.1%	7	1393
Croydon	-7.9%	8	997
Greenwich	-4.5%	9	579
Sutton	-3.0%	10	257
Haringey	-0.6%	11	1753
Merton	2.7%	12	341
Southwark	3.0%	13	1691
Kensington and Chelsea	3.4%	14	674
Bexley	3.8%	15	274
Wandsworth	4.2%	16	770
Lewisham	5.6%	17	980
Ealing	6.8%	18	846
Brent	10.0%	19	1333
Havering	10.8%	20	628
Waltham Forest	11.3%	21	888
Hackney	11.3%	22	1543
Barnet	13.2%	23	703
Redbridge	13.3%	24	995
Hillingdon	16.9%	25	546
Harrow	23.3%	26	365
Enfield	28.2%	27	1200
Hammersmith and Fulham	32.1%	28	721
Westminster	36.7%	29	3177
Hounslow	38.7%	30	624
Kingston upon Thames	50.0%	31	246
Richmond upon Thames	56.0%	32	351
London Total	2.2%		30798

- Personal robbery has decreased Haringey, by 0.6%, however, almost 1,800 offences a year take place. London wide offending has slightly worsened, experiencing an increase of 2.2%.
- Mobile phones continue to be the most commonly stolen items during robberies, as well as cash and jewellery.
- Moped enabled robbery volumes have reduced since mid-2018. The highest volumes have taken place in Islington, Camden and Hackney.



Knife Injury Victims

Borough	Knife Injury Victims	London Rank	Volume
Sutton	-29.3%	1	41
Bromley	-27.5%	2	79
Hillingdon	-25.9%	3	109
Haringey	-25.4%	4	173
Newham	-24.0%	5	193
Brent	-23.2%	6	195
Lambeth	-22.6%	7	212
Harrow	-22.5%	8	79
Southwark	-21.6%	9	250
Hackney	-19.1%	10	165
Richmond upon Thames	-18.4%	11	31
Camden	-16.9%	12	152
Barking and Dagenham	-16.7%	13	105
Redbridge	-16.5%	14	116
Lewisham	-15.7%	15	172
Islington	-15.2%	16	162
Croydon	-12.5%	17	175
Havering	-8.1%	18	91
Waltham Forest	-4.3%	19	155
Enfield	-3.7%	20	180
Barnet	-3.1%	21	123
Merton	0.0%	22	55
Greenwich	1.2%	23	165
Ealing	3.6%	24	171
Hammersmith and Fulham	8.3%	25	104
Hounslow	10.0%	26	121
Westminster	12.1%	27	185
Kensington and Chelsea	13.3%	28	94
Tower Hamlets	13.6%	29	243
Bexley	13.7%	30	58
Wandsworth	25.7%	31	137
Kingston upon Thames	51.5%	32	50
London Total	-10.6%		4341

- The volume of overall knife injuries has reduced by 25.4% in Haringey, compared to a 10.6% London-wide reduction.
- Haringey has also experienced a reduction in young victims of knife injuries, reducing by **-21%**.
- **However, serious incidents still occur, which often lead to serious and life-changing injuries.**
- Key locations are Wood Green High Street, Turnpike Lane and Bruce Grove
- Hotspots have continued to shift, following targeted partnership work in long standing high volume locations.



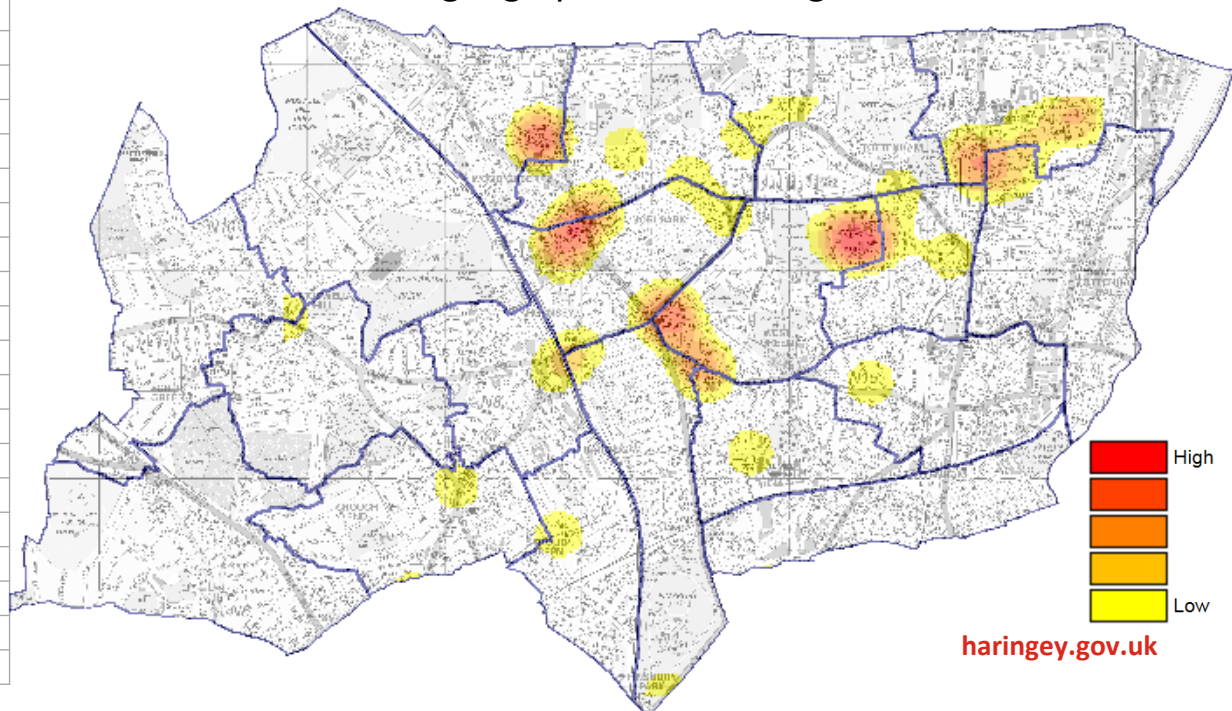
Lethal Barrelled Firearm Discharges

Borough	Lethal Barrelled Firearm Discharges	London Rank	Volume
Camden	-78.6%	1	3
Havering	-70.0%	2	3
Sutton	-50.0%	3	2
Hammersmith and Fulham	-50.0%	4	3
Newham	-42.9%	5	24
Hillingdon	-36.4%	6	7
Richmond upon Thames	-33.3%	7	2
Croydon	-21.4%	8	11
Redbridge	-20.0%	9	8
Merton	-20.0%	10	4
Kensington and Chelsea	-20.0%	11	4
Haringey	-19.5%	12	33
Islington	-18.2%	13	9
Enfield	-15.8%	14	16
Hackney	-3.4%	15	28
Kingston upon Thames	0.0%	16	2
Westminster	12.5%	17	9
Brent	21.7%	18	28
Barking and Dagenham	37.5%	19	11
Waltham Forest	37.5%	20	22
Southwark	41.2%	21	24
Greenwich	62.5%	22	13
Harrow	80.0%	23	9
Lambeth	93.3%	24	58
Bromley	100.0%	25	8
Hounslow	100.0%	26	10
Lewisham	142.9%	27	17
Barnet	150.0%	28	5
Wandsworth	166.7%	29	8
Ealing	200.0%	30	12
Bexley	200.0%	31	9
Tower Hamlets	325.0%	32	17
London Total	12.3%		419

▪ Lethal barrelled firearm discharges in Haringey have decreased year on year by 19.5%. London has increased by 12.3% over this same period.

▪ This is a notable improvement from mid-2018, during which significantly higher volumes of firearms discharges occurred.

▪ Firearm related incidents mostly occur to the East of the borough, and show some correlation with known gang linked areas. Offences also demonstrate some geographical clustering.



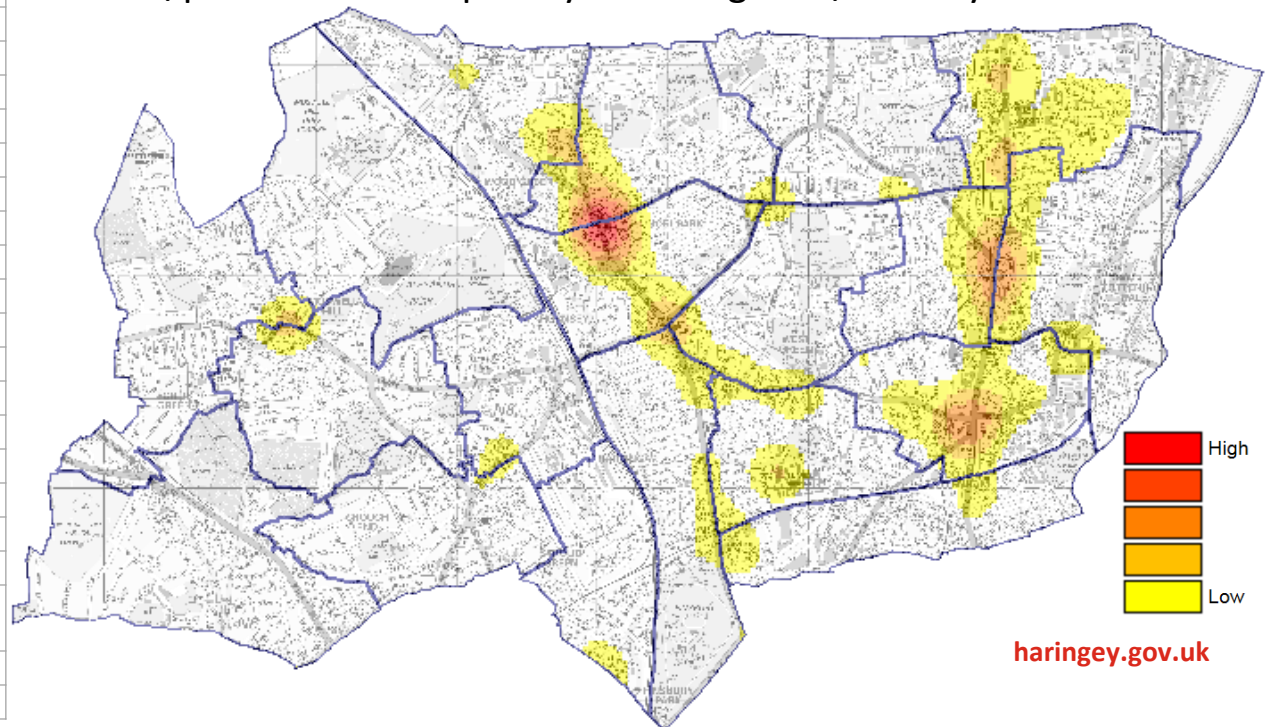
Non-Domestic Abuse Violence With Injury

Borough	Non-Domestic Abuse VWI	London Rank	Volume
Merton	-10.4%	1	840
Bromley	-7.7%	2	1358
Lambeth	-7.5%	3	2470
Haringey	-7.0%	4	1971
Havering	-7.0%	5	1244
Hillingdon	-6.4%	6	1641
Camden	-5.6%	7	1914
Bexley	-5.5%	8	1015
Brent	-5.2%	9	2227
Enfield	-4.8%	10	1559
Hackney	-4.4%	11	2108
Waltham Forest	-4.3%	12	1435
Lewisham	-4.3%	13	1864
Barnet	-4.2%	14	1430
Sutton	-4.0%	15	871
Newham	-3.0%	16	2168
Greenwich	-2.9%	17	1792
Croydon	-2.3%	18	2176
Barking and Dagenham	-1.7%	19	1309
Southwark	-1.1%	20	2272
Kensington and Chelsea	-0.8%	21	1030
Richmond upon Thames	-0.8%	22	653
Ealing	-0.2%	23	2056
Redbridge	1.5%	24	1476
Hounslow	1.7%	25	1631
Harrow	2.5%	26	949
Islington	2.8%	27	1778
Westminster	2.9%	28	3043
Tower Hamlets	3.5%	29	2065
Kingston upon Thames	6.8%	30	895
Hammersmith and Fulham	9.8%	31	1356
Wandsworth	12.5%	32	1705
London Total	-2.0%		52301

- Non-domestic VWI offences have decreased in Haringey by 7%, which is larger than the London-wide decrease of 2%.

- A significant proportion of incidents occur in busy locations, such as shopping centres, transport hubs and key thoroughfares.

- Some incidents are also linked to retail/night time economy related issues, including when individuals have been refused entry to shops or bars/pubs and subsequently attacking staff/security.



Summary

- Several areas of positive performance

- Current MOPAC Police and Crime Plan priorities (Robbery and Non-DA VWI) continue to be high-volume and high risk

- Challenges include :
 - Responding to Robbery and Weapon Enabled Crime

 - Continuing to tackle vulnerability, including Domestic Abuse and Youth Violence